

# Industrial Ironers

IC44819, IC44821, IC44825, IC44828, IC44832 F-R/FLF



## Features and benefits

- Fully electric feeder requiring no compressed air – regular, silent and smooth work
- Electro-mechanical clamps, automatic linen detection, smooth closing and holding of the linen, smooth opening and feeding of item (compensation of the elasticity of the fibres)
- Easy-to-use electronic control panel, RABC (Risk Analysis and Biocontamination Control – EN 14065) compatible
- DIAMMS (Direct Ironer Advanced Moisture Management System); Automatic speed adjustment with moisture sensors to ensure a perfect result
- Spring loaded pressure roll ensures outstanding ironing quality
- Durable ironing belts made of Nomex® which can withstand temperatures above 430°F
- Fully encased machine for maximum workplace safety and energy saving
- Finger guard protection provides additional security for operators
- Nickel-plated cylinder prevents rust and improves lifetime
- **Maintenance free ceramic gas burner** minimizes downtimes. 20% more efficient than regular blue flame burners. A unique and patented burner by Electrolux
- Return feed, can be installed close to a wall for maximum space utilisation
- Labour saving automatic Feeding and Length-Folding device (FLF model)
- Automatic Feeding and Rear delivery (F-R model)
- Easy access to all parts for easy maintenance

## Main options

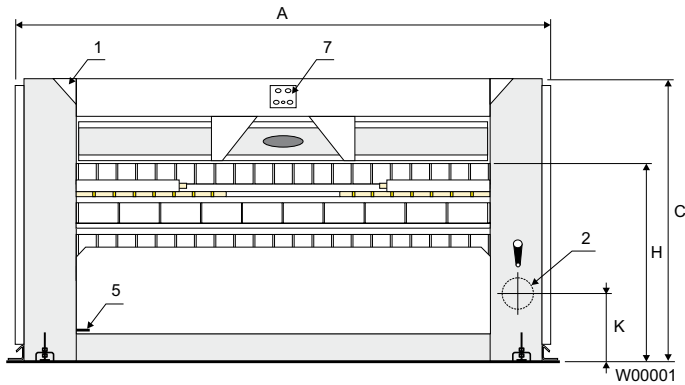
- Multi-layer cylinder Dubixium™ for increased production on gas heated machines
- CMIS (Certus Management Information System) connection for traceability according to European Standard EN14065

Main specifications		IC44819	IC44821	IC44825	IC44828	IC44832	
Capacity*, max. water evaporation**	gallon/h	15/9.3	16.6/9.8	19.8/12.2	21.4/13.5	24.6/15.6	
Cylinder, diameter (gas/steam)	mm	479/457	479/457	479/457	479/457	479/457	
	inch	29.5/18	29.5/18	29.5/18	29.5/18	29.5/18	
	length	mm	1910	2120	2540	2750	3170
	inch	75 3/16	83 7/16	100	108 1/4	124 13/16	
Ironing speed	ft/min	4.9-29.5	4.9-29.5	4.9-29.5	4.9-29.5	4.9-29.5	
Heating, steam (900 kPa)	lb/h	183	203	243	271	311	
	gas	Btu/h (kW)	133100(39)	150100(44)	177400(52)	191100(56)	221800(65)

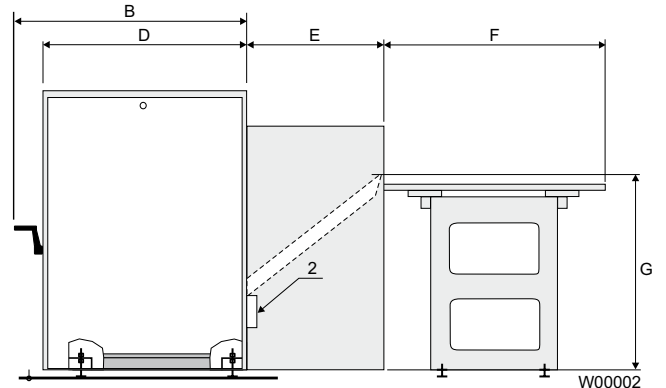
\* 50% residual moisture content cotton 6.35 oz/ft² and 100% cylinder use (ISO 9398-1).  
 \*\* EI/steam/gas.

Electrical connections*			IC44819	IC44821	IC44825	IC44828	IC44832
Heating Voltage							
Gas,	208-240V 3AC 60 Hz	kW(A)	2 (15)	2 (15)	2 (15)	2 (15)	2 (15)
steam	400-415V 3AC 50/60 Hz	kW(A)	2 (15)	2 (15)	2 (15)	2 (15)	2 (15)
<b>Steam, gas and air connections</b>							
Steam	inch		3/4	3/4	3/4	3/4	3/4
Rec. steam pressure	psi		130	130	130	130	130
Condensate	inch		3/8	3/8	3/8	3/8	3/8
Gas	inch		3/4	3/4	3/4	3/4	3/4
Gas pressure,							
natural gas (G20/G25)	psi		0.29/0.36	0.29/0.36	0.29/0.36	0.29/0.36	0.29/0.36
propane (G31)	psi		0.54/0.73	0.54/0.73	0.54/0.73	0.54/0.73	0.54/0.73
Air outlet	ø mm/inch		160 / 6 5/16	160 / 6 5/16	160 / 6 5/16	160 / 6 5/16	160 / 6 5/16
Evacuated air	ft <sup>3</sup> /h		20481	20835	21540	22600	22955
Pressure drop	max. psi		0.03	0.03	0.03	0.03	0.03
<b>Sound levels</b>							
Airborne sound level	dB(A)		73	73	73	73	73
<b>Heat emission</b>							
% of installed power, max.			3	3	3	3	3
<b>Shipping data, (F-R model)</b>							
	net, kg/lbs		1080/2380	1130/2491	1220/2689	1300/2865	1390/3064
	crated, kg/lbs		1380/3042	1430/3152	1520/3350	1600/3526	1690/3725
Shipping volume, F-R model	m <sup>3</sup> /ft <sup>3</sup>		5.8/205	6.2/219	7/248	7.4/261	8.2/290
<b>Dimensions in mm / inch</b>							
<b>A</b> Width			2575 / 101 3/8	2785 / 109 5/8	3205 / 126 3/16	3415 / 134 7/16	3835 / 151
<b>B</b> Depth			1280 / 50 3/8	1280 / 50 3/8	1280 / 50 3/8	1280 / 50 3/8	1280 / 50 3/8
<b>C</b> Height			1460 / 57 1/2	1460 / 57 1/2	1460 / 57 1/2	1460 / 57 1/2	1460 / 57 1/2
<b>D</b>			1160 / 45 11/16	1160 / 45 11/16	1160 / 45 11/16	1160 / 45 11/16	1160 / 45 11/16
<b>E</b> F-R model only			670 / 26 3/8	670 / 26 3/8	670 / 26 3/8	670 / 26 3/8	670 / 26 3/8
<b>F</b> F-R model only			800 / 31 1/2	800 / 31 1/2	800 / 31 1/2	800 / 31 1/2	800 / 31 1/2
<b>G</b> F-R model only			840 / 33 1/16	840 / 33 1/16	840 / 33 1/16	840 / 33 1/16	840 / 33 1/16
<b>H</b>			1050 / 41 5/16	1050 / 41 5/16	1050 / 41 5/16	1050 / 41 5/16	1050 / 41 5/16
<b>I</b>			1910 / 75 3/16	2120 / 83 7/16	2540 / 100	2750 / 108 1/4	3170 / 124 13/16
<b>K</b>			355 / 14	355 / 14	355 / 14	355 / 14	355 / 14
<b>L</b>			190 / 7 1/2	190 / 7 1/2	190 / 7 1/2	190 / 7 1/2	190 / 7 1/2
<b>1</b> Control panel <b>2</b> Exhaust connection <b>3</b> Steam connection <b>4</b> Condensate connection <b>5</b> Electrical connection <b>6</b> Gas connection <b>7</b> Feeder control panel							

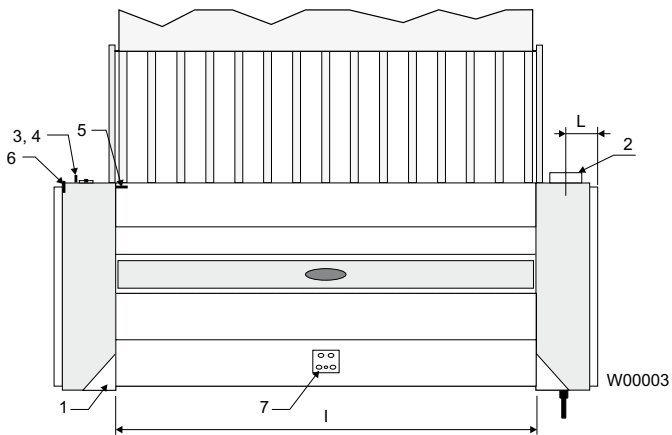
\* Other voltages available, see installation manual.



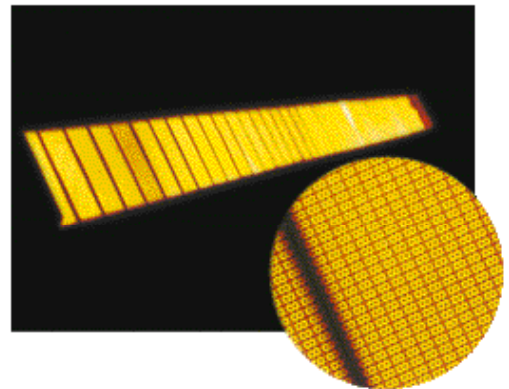
Front view



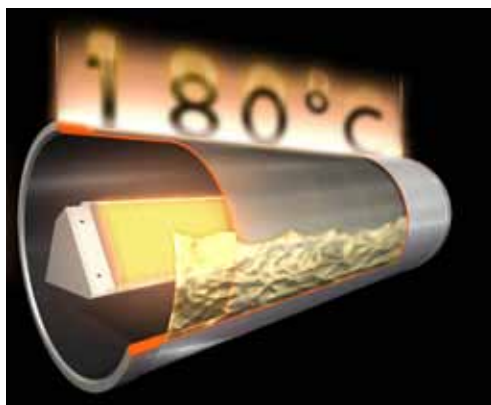
Right view



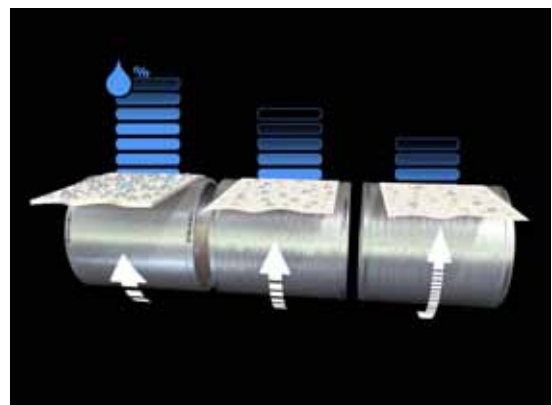
Top view



**Maintenance free ceramic gas burner** minimizes downtimes. 20% more efficient than regular blue flame burners. A unique and patented burner by Electrolux



Multi-layer thermal oil Dubixium™ cylinder guarantees smooth operation at all times thanks to zero overheating of sides.



Automatic ironing speed adjustment systems DIAMMS™ is based on real moisture of the items. Unique and patented.

