

# **TECHSTAR** **PLASTICS INC.**

**Ontario**  
Laundry Systems Inc.  
★ Proudly Canadian. Family owned and operated since 1995.  
905-673-1308  
info@ontariolaundry.com

**Heavy Duty Techtrucks™**



**Starcarts™**



**Next Generation Starcarts™**



**SOS™ Storage Bins**



**Forklift Bins**



**MOULDING  
GREAT  
PRODUCTS  
SINCE  
1978.**

## Mini Starcarts™

Small but mighty! Mini Starcarts™ are Techstar's smallest carts and come equipped with 4 all-swivel threadguard casters mounted on a plated steel undercarriage giving them excellent maneuverability! Mini Starcarts™ are moulded from polyethylene giving them the strength to hold up under tough conditions. Stocked in **grey**.

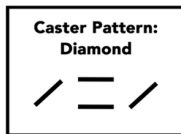


Model Number	Bu.	Cu. Ft.	Inside (L x W x H)	Outside (L x W x H)	Max Load	Shipping Weight	Caster Size
100A	4	5	18" x 18" x 23"	21" x 21" x 27"	200 lbs	20 lbs	3"
105A	5	6	30" x 16" x 24"	33" x 19" x 28"	200 lbs	25 lbs	3"
350A	6	7	30" x 20" x 20"	33" x 23" x 24"	300 lbs	25 lbs	3"
108A	6	7	22" x 22" x 34"	24" x 24" x 38"	200 lbs	30 lbs	3"
110A	7	8	31" x 21" x 21"	35" x 25" x 25"	300 lbs	30 lbs	3"
115A	8	9	45" x 16" x 24"	48" x 19" x 28"	300 lbs	40 lbs	3"

## Regular Starcarts™



**Some of our Best Sellers!** A seamless rotomoulded 3/16" thick body and a treated plywood base ensures these carts are built to last! With 3" threadguard casters you'll find these carts easy to maneuver. Lids are available for models 125A & 145A. Stocked in **grey**.



125A

Model Number	Bu.	Cu. Ft.	Inside (L x W x H)	Outside (L x W x H)	Max Load	Shipping Weight	Caster Size
125A	10	12	35" x 23" x 25"	39" x 27" x 30"	400lbs	40lbs	3"
135A	12	15	37" x 25" x 26"	41" x 29" x 31"	400lbs	45lbs	3"
145A	14	16	38" x 26" x 28"	43" x 31" x 33"	400lbs	50lbs	3"

## Choosing the Perfect Starcart™

1. Consider the material you want to move; consider size or volume restrictions for the inside of your desired cart and compare these to our listed **inside** cart dimensions.
2. Be sure to consider where you'll use the cart; doorways, hallways, elevators and spaces in between pose their own restrictions. Compare these to our listed **outside** cart dimensions.
3. Think about the maximum weight of the materials you'll be handling. If you require at least a 300lb load capacity, a cart with an 800lb load capacity will roll easier (larger wheels) and last longer (thicker walls). In the long run this may be better value for you.
4. Would an **easy access cut out** or a **spring lift platform** be advantageous to you? Think of how high your materials may be piled or how much bending is required by the material handler. These options really allow you to maximize the height of your cart.
5. Also consider the best caster pattern for your application, and the type of surface you'll be using the cart on. Starcarts™ are available in 3 caster patterns: the **Corner** pattern offers 2 swivel and 2 rigid casters mounted on each of the 4 corners. Corner casters deliver the most stability for safely moving heavy loads, and can handle distances well. The **All Swivel** pattern offers 4 all-swivel casters mounted on each of the four corners; all swivel casters are best for tight areas. The **Diamond** pattern offers 2 swivel and 2 rigid casters mounted in a diamond configuration. Diamond casters turn easiest and can handle long distances well.



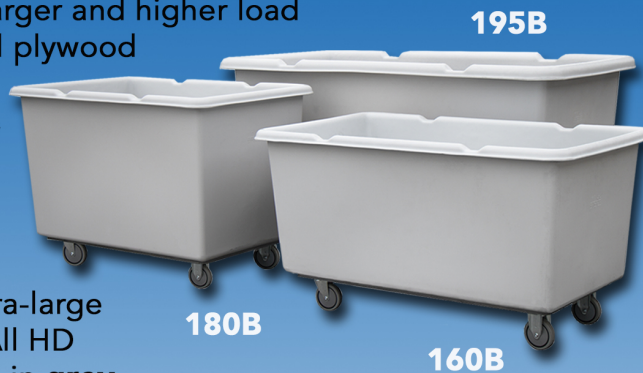
Caster Pattern:  
Corner



Caster Pattern:  
Diamond

# STARCARTS™

Techstar's **Heavy Duty Starcart™** series include heavier duty models of our Regular Starcarts™ as well as four larger sizes. These carts offer all the same great features as our Regular Starcarts™, with twice the weight carrying capacity! Features include thicker walls, larger and higher load rated casters, a treated plywood undercarriage and a small taper for nesting, minimizing required storage space and shipping costs. Heavy Duty Starcarts™ are perfect for moving extra-large or extra-heavy loads. All HD Starcarts™ are stocked in **grey**.



## Heavy Duty Starcarts™

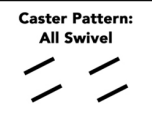
Caster Pattern: Corner	Model Number	Bu.	Cu. Ft.	Inside (L x W x H)	Outside (L x W x H)	Max Load	Shipping Weight	Caster Size
	OR Caster Pattern: Diamond	125B	10	12	35" x 23" x 25"	39" x 27" x 31"	800lbs	50lbs
135B		12	15	37" x 25" x 26"	41" x 29" x 32"	800lbs	55lbs	4"
145B		14	16	38" x 26" x 28"	43" x 31" x 34"	800lbs	60lbs	4"
155B		16	19	38" x 26" x 30"	43" x 31" x 36"	800lbs	65lbs	4"
160B		18	22	54" x 30" x 25"	59" x 35" x 32"	800lbs	70lbs	5"
180B		19	24	48" x 30" x 30"	53" x 35" x 38"	800lbs	85lbs	5"
195B		38	46	72" x 36" x 33"	78" x 42" x 42"	1600lbs	115lbs	6"

## Econocarts

Our most economical Starcart™! Sharing some of the same great features as our Regular Starcarts™, our Econocarts are designed for lighter loads and priced accordingly. Econocarts are rotomoulded from **black** recycled plastic and each feature all-swivel threadguard casters.



Model Number	Bu.	Cu. Ft.	Outside (L x W x H)	Max Load	Shipping Weight	Caster Size
111ECS	8	9	36.5" x 24.5" x 26"	175 lbs	23 lbs	2.5"
125EC	10	12	39" x 27" x 29"	200 lbs	30 lbs	3"



125EC



## Spring Lift Platforms

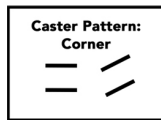
### A Breakthrough in Material Handling!

Also known as back savers, these Spring Lift Platforms make all kinds of material handling easier and less strenuous on your back because they eliminate excess bending! When loading materials the platform automatically lowers with the weight. When the materials are removed the platform automatically raises, bringing your materials up to the top of the cart. Spring Lift Platforms are available for just about all Starcarts™. They are easy to install; simply hook over the lip of the cart.

## Bulk Handling Starcarts™



1800B 1700B



**Techstar's Bulk Handling Starcarts™ are the perfect combination of accessibility and strength!** These carts are designed to be tough under any condition with heavy ribbing and an extra rugged moulded plastic base. Bulk Handling Starcarts™ offer the maximum in durability! The sidewall cut out gives easy access to the cart's contents, while the 2 rigid and 2 swivel non-marking neoprene casters make it easy to quietly maneuver as well! Stocked in **blue**.

Model Number	Bu.	Cu. Ft.	Inside (L x W x H)	Outside (L x W x H)	Max Load	Shipping Weight	Caster Size
1700B	30	37	47" x 27" x 46"	48" x 28" x 55"	1000 lbs	120 lbs	6"
1800B	37	46	47" x 27" x 57"	48" x 28" x 66"	1000 lbs	145 lbs	6"

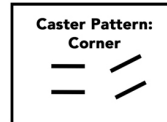
## Jumbo Starcarts™

**The Jumbo Starcart™ is our largest cart** and capable of holding up to 1500 lbs. This cart comes stocked with 2 rigid and 2 swivel threadguard casters mounted on a recessed plywood undercarriage. Don't let the size of this cart fool you; you'll be surprised how easy it is to maneuver! **Options:** 1 tier cutout, 2 tier cutout, 1 side cut-out or 2 side cut-out. (1 tier, 1 side cutout option shown)

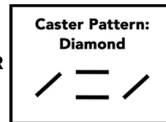


850B

Model Number	Bu.	Cu. Ft.	Inside (L x W x H)	Outside (L x W x H)	Max Load	Shipping Weight	Caster Size
840B	30	38	60" x 40" x 28"	62" x 44" x 38"	1200 lbs	180 lbs	6"
850A	48	60	62" x 42" x 42"	65" x 45" x 52"	900 lbs	170 lbs	5"
850B	48	60	62" x 42" x 42"	65" x 45" x 54"	1500 lbs	200 lbs	6"



OR

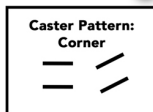


## Convertible Linen Trucks

**Practically Two Carts in One!**



1750B



The reinforced plastic shelves drop down and slide into place, creating a strong and secure door. This truck is equipped with heavy duty, non-marking, neoprene casters and the smooth design eliminates the chance of linen snags. The moulded heavy duty ribbing provides maximum durability while the moulded in handles make for easy maneuverability. **Options:** closed or open top, cart colour, shelf colour. (closed top option shown)

Model Number	Bu.	Cu. Ft.	Outside (L x W x H)	Max Load	Shipping Weight	Caster Size
1750B	37	46	48" x 28" x 73.5"	1500 lbs	200 lbs	6"

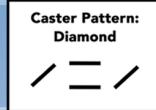


# STARCARTS™

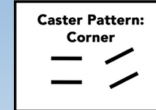
**Techstar's Easy Access Starcarts™ Make Material Handling Easier!**

Our Easy Access Starcart™ was designed with you in mind! This ergonomic design ensures the best possible material handling experience. The sidewall cut out gives easy access to the contents, reducing stress and strain on your lower back, while minimizing excessive bending! These popular carts are mounted on a treated plywood base with your choice of caster pattern, allowing you to customize these Starcarts™ to fit your needs! Stocked in **grey**.

## Easy Access Starcarts™



OR



Model Number	Bu.	Cu. Ft.	Inside (L x W x H)	Outside (L x W x H)	Max Load	Shipping Weight	Caster Size
150B	16	19	38" x 26" x 29"	43" x 31" x 36"	800 lbs	52 lbs	4"
165B	18	21	41" x 27" x 32"	46" x 31" x 39"	900 lbs	75 lbs	5"
175B	21	24	41" x 27" x 42"	46" x 31" x 49"	900 lbs	85 lbs	5"
185B	21	24	58" x 27" x 32"	63" x 31" x 39"	900 lbs	100 lbs	5"

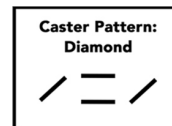


## Doublewall Starcarts™

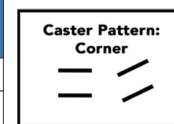
When you need a cart that can handle even the roughest jobs, you can't go wrong with the Doublewall Starcart™. Designed to handle abuse, the reinforced doublewall thickness can stand up to just about anything!

**Model 1000B** has a painted steel base with 6" threadguard casters in your choice of corner or diamond caster pattern.

**Model 1200B** has a treated plywood base with 6" threadguard casters, in a diamond caster pattern.



OR



Model Number	Bu.	Cu. Ft.	Inside (L x W x H)	Outside (L x W x H)	Max Load	Shipping Weight	Caster Size
1000B	12	15	35" x 25" x 30"	39" x 29" x 39"	1500 lbs	90 lbs	6"
1200B	20	24	49" x 30" x 29"	52" x 32" x 37"	1500 lbs	125 lbs	6"

# STARCARTS™

## Elevated Starcarts™

A removable plastic body at a back-friendly height makes our Elevated Starcarts™ the perfect solution for dozens of material handling needs. The 3" all-swivel casters mounted on a powder coated steel frame provides long-lasting durability and maximum maneuverability. Stocked in **grey**.



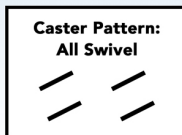
Model Number	Bu.	Cu. Ft.	Inside (L x W x H)	Outside (L x W x H)	Max Load	Shipping Weight	Caster Size
300E	4	5	30" x 16" x 16"	33" x 19" x 28"	200 lbs	25 lbs	3"
350E	6	7	30" x 20" x 20"	33" x 23" x 29"	200 lbs	35 lbs	3"



## Heavy Duty Elevated Starcarts™



These Heavy Duty Elevated Starcarts™ are perfect for heavier loads. The HD Elevated Starcarts™ have all the same great features as the regular Elevated Starcarts™ except with larger all-swivel threadguard casters and a reinforced steel frame, giving them the ability to handle 4 to 5 times the weight of the regular models. Stocked in **blue**.



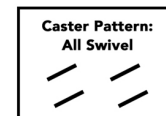
Model Number	Bu.	Cu. Ft.	Inside (L x W x H)	Outside (L x W x H)	Max Load	Shipping Weight	Caster Size
310E	4	5	35" x 23" x 10"	39" x 27" x 29"	800 lbs	55 lbs	4"
320E	2	3	45" x 22" x 5"	48" x 24" x 34"	800 lbs	60 lbs	4"
330E	7	9	45" x 22" x 15"	48" x 24" x 36.5"	1000 lbs	70 lbs	4"

## Scale Starcarts™

Scale Starcarts™ make weighing your materials easier. Instead of having to lug your materials to a stationary scale, these carts bring the scale to the materials without the hassle. These carts are adjustable for tare weight so you'll get an accurate measure of your load up to 250 lbs! The removable plastic body is equipped with a powder coated steel base, and mounted on all-swivel threadguard casters. Stocked in **grey**.



Model Number	Bu.	Cu. Ft.	Inside (L x W x H)	Outside (L x W x H)	Max Load	Shipping Weight	Caster Size
300 SC	4	5	30" x 16" x 16"	33" x 19" x 29"	250 lbs	35 lbs	3"
350 SC	6	7	30" x 20" x 20"	33" x 23" x 33"	250 lbs	45 lbs	3"



## Next Generation Starcarts™

The Starcart™ that has it all! Techstar's Next Generation Starcart™ is a force to be reckoned with! You'll find these carts more durable and impact resistant because we've combined a single wall body with a double wall box-style lip.

You'll have better rollability and maneuverability because we've paired two heavy duty casters in the front with two larger poly-core wheels in the rear. Add the strength of the steel undercarriage and the ergonomic moulded in handles and you have what we believe to be the best poly cart on the market! Stocked in **blue**.



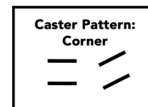
Model Number	Bu.	Cu. Ft.	Outside (L x W x H)	Max Load	Shipping Weight	Caster Size
730B	14	16	48"x 31"x 34.5"	1000 lbs	80 lbs	10" + 5"
750B	19	24	60"x 31.5"x 35.5"	1000 lbs	100 lbs	12" + 5"
770B	32	39	72"x 35.5"x 40"	1500 lbs	130 lbs	12" + 6"

## Duracarts™



**These carts are seriously durable!** Techstar Duracarts™ offer a solution for many of your material handling needs. Handles moulded into the cart create a sleek design, while the 2 swivel and 2 fixed non-marking casters mounted on a recessed plywood undercarriage deliver excellent maneuverability.

To top it off this cart is a work horse! All Duracart™ models have a 400 lb load capacity. Stocked in **blue**.



Model Number	Bu.	Cu. Ft.	Outside (L x W x H)	Max Load	Shipping Weight	Caster Size
DC-10	10	12	43"x 28"x 30.5"	400 lbs	40 lbs	3"
DC-12	12	15	45"x 30"x 31.5"	400 lbs	45 lbs	3"
DC-14	14	16	46"x 31"x 36.6"	400 lbs	50 lbs	3"

## Heavy Duty Techtrucks™

The Heavy Duty Techtruck™ features a double wall lip increasing both the durability and longevity of the truck. The moulded collar takes away the need for a frame,

Model Number	Cu. Yards	Outside (L x W x H)	Max Load	Shipping Weight	Wheel & Caster Size
420C	5/8	58" x 29" x 38"	1000 lbs	85 lbs	10" + 4"
441C	1.1	68" x 36" x 42"	1200 lbs	100 lbs	12" + 4"
460C	1.5	81" x 44" x 50"	1500 lbs	125 lbs	12" + 4"
480C	2	74" x 48" x 56"	2000 lbs	180 lbs	12" + 5"

therefore eliminating the extra cost of a frame. It's moulded handles make this truck more ergonomic and easier to handle. Two large rubber recessed wheels and swivel casters improve both maneuverability and stability, and are mounted on a painted steel base. **Model 420C** has only one front caster, and is mounted on a rugged moulded plastic base. Techtrucks™ are stocked in **grey**. **Options:** hinged-lids available at extra charge for models 420C & 441C.



420C

441C

460C

480C

## Econo Techtruck™

Model Number	Cu. Yards	Outside (L x W x H)	Max Load	Shipping Weight	Wheel & Caster Size
420EC	5/8	55" x 28" x 38"	300 lbs	50 lbs	10" + 4"

If you have large but lighter loads, our Econo Techtruck™ is the

perfect way to move and dump your materials. Moulded from recycled **black** polyethylene, this truck is a cost effective option for your material handling needs, plus these trucks are nestable, minimizing storage and shipping costs. The Econo

Techtruck™ comes equipped with a rugged moulded plastic base and is mounted on two 10" polyolefin wheels in the rear and one 4" threadguard caster up in the front, giving this truck excellent maneuverability and stability for dumping. **Options:** hinged-lid available at extra charge.



420EC



## Regular Duty Techtrucks™

The Regular Duty Techtruck™ has the same great design as the HD Techtrucks™. Moulded from FDA approved polyethylene, this lighter weight Techtruck™ is a more economical option. Techtrucks™ are also nestable to minimize shipping costs and storage. **Model 420LT** is mounted on a rugged moulded plastic base. Stocked in **grey**.

**Options:** Hinged-lids available at extra charge for models 420LT & 441LT. (hinged-lid shown)

Model Number	Cu. Yards	Outside (L x W x H)	Max Load	Shipping Weight	Wheel & Caster Size
420LT	5/8	55" x 28" x 38"	400 lbs	70 lbs	10" + 4"
441LT	1.1	63" x 35" x 40"	500 lbs	85 lbs	12" + 3"
460LT	1.5	77" x 43" x 50"	600 lbs	115 lbs	12" + 4"
480LT	2	73" x 47" x 56"	800 lbs	160 lbs	12" + 5"

441LT



## Self Dumping Hoppers



420SDH

(caster option shown)

Our HD Techtruck™ got an upgrade! We have created a Self Dumping Hopper equipped with a forkliftable steel base for easy lifting, transporting and elevated dumping. A simple manual pull release safety latch controls the dumping process, before returning to the upright position automatically.

**Option:** 6" casters at extra cost.

Model Number	Cu. Yards	Outside (L x W x H)	Max Load	Shipping Weight	Caster Size
420SDH	5/8	57" x 28" x 41"	900 lbs	180 lbs	6" (optional)
441SDH	1.1	67" x 35" x 45"	1000 lbs	250 lbs	6" (optional)

Caster Pattern:

Corner



## Ingredient Bins

Techstar's Ingredient Bins are perfect for bakeries or anywhere else that flour, grains and other food related products need to be safely stored.

These bins are easy to maneuver with 3" heavy duty casters mounted on a galvanized steel base. Rotomoulded from FDA

approved polyethylene, Ingredient Bins are seamless with a smooth inside for easy cleaning. Stocked in **natural white**.



101IB

103IB

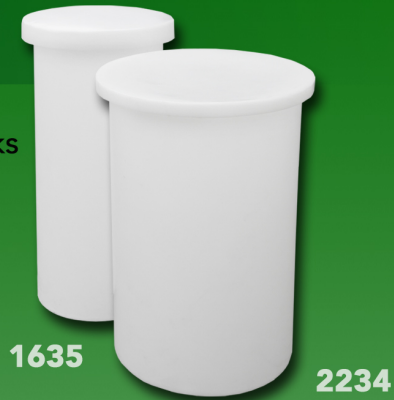
105IB

Model Number	Cu. Ft.	Imperial Gallons	Outside (L x W x H)	Lid	Shipping Weight	Caster Size
101 IB	3.36	21	29" x 12.25" x 27"	Hinged	20 lbs	3"
103 IB	4.4	28	29" x 15" x 27"	Hinged	25 lbs	3"
105 IB	6	45	33" x 19" x 29"	Sliding	35 lbs	3"

TECHTRUCKS™ & MORE

## Cylindrical Tanks

Perfect for both mixing as well as storing liquids and chemicals! Our Cylindrical Tanks are translucent, making it easy to see the level of the contents inside, and being moulded from 100% virgin linear low density polyethylene, they are also FDA approved! These tanks are easy to clean and the perfect economical alternative to stainless steel tanks. Models 1635 & 2234 come with lids. Stocked in **natural white**.



Model Number	Imperial Gallons	Litres	Diameter & Depth	Wall Thickness	Shipping Weight (Tank & Lid)
1635	25	110	16" x 35"	3/16"	8 lbs & 1 lbs
2234	45	200	22.5" x 34"	3/16"	17 lbs & 3 lbs
3048	125	560	30" x 48"	1/4"	38 lbs & N/A

## Forklift Bins



Forklift Bins come equipped with slots on all four sides making them easy to lift, and maneuver with any forklift machine. Techstar's Forklift Bins both nest when empty and stack when full, making them perfect for minimizing storage space and shipping costs. Each corner has barrel type nesting stops, ensuring a secure hold when nested. As an added bonus, both the bin

and the lid are seriously tough, allowing you to stack them on top of one another. Model 4900 is not pallet truck accessible.

**Options:** lids available at extra cost. (lid option shown)

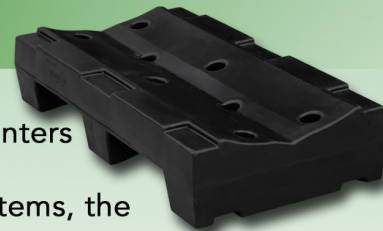
Model Number	Cu. Ft.	Dimensions (L x W x H)	Max Load	Shipping Weight (Bin/Lid)
4800	24	48" x 42" x 30"	1200 lbs	75/30 lbs
4900	38	44" x 44" x 46"	2000 lbs	90/30 lbs

## Solid Deck & Roll Pallets

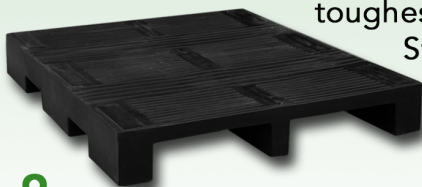
**Roll Pallet:** Protect your roll product from damage with the 100% polyethylene roll pallet; no nails, splinters or sharp edges, plus two-way forklift entry!

**Solid Deck Pallets:** Ideal for warehouse racking systems, the doublewall reinforced Solid Deck Pallet features four-way entry and anti-slip ribbing; moulded to last and can stand up to the toughest of conditions.

Stocked in **black**.



RP2000



P2100

Model Number	Dimensions (L x W x H)	Max Load	Shipping Weight
P 2100	46.5" x 39" x 6"	2000 lbs Rackable 4000 lbs Static	60 lbs
RP 2000	38.5" x 21" x 8.5"	1500	24 lbs
RP 3000	46" x 46" x 16"	6000	72 lbs

Techstar's Bullseye's™ can be customized to fit YOUR needs! These recycling containers can be custom designed in 2 paks, 3 paks, etc. to suit your particular application. Further personalize with your choice of colours and lid configuration to create your unique recycling station! Please call for details.

\* All of these recycling containers are stocked in **blue** but available in premium colours at no extra cost! See back cover for all available colours.

# RECYCLING CONTAINERS

## 16 & 30 Gallon Bullseyes™



549A

549B

Designed to fit into smaller spaces, Techstar's 16 Gallon Bullseye™ is perfect for tight areas, while the 30 Gallon Bullseye™ has nearly twice the capacity! Each container is customizable with either a round hole suitable for cans, cups and bottles, or a square/rectangular slot ideal for waste paper or garbage. Our 549 models hold a bag sized 30"x38", while the 559 models hold a bag sized 42"x48".



559A

559B

Model Number	Imperial Gallons	Litres	Dimensions (L x W x H)	Shipping Weight	Lid Configuration
549A	16	73	20.5"x 11"x 34"	10 lbs	Round
549B	16	73	20.5"x 11"x 34"	10 lbs	Slot
559A	30	136	20.5"x 20.5"x 34"	14 lbs	Round
559B	30	136	20.5"x 20.5"x 34"	14 lbs	Square

## Half Moon Bullseyes™



519A

519B

With their space-saving design, the Half Moon Bullseyes™ are perfect for tight spaces. These bins are versatile, meaning you can place them on the ground or mount them on the wall.

Model Number	Imperial Gallons	Litres	Dimensions (L x W x H)	Shipping Weight	Lid Configuration
519A	15	68	22.5"x 12.25"x 36"	10 lbs	Round
519B	15	68	22.5"x 12.25"x 36"	10 lbs	Slot

## Jumbo Bullseye™

The 108 JB is our largest Bullseye™ holding up to 45 gallons! Equipped with a heavy duty snap on lid, and a round hole with a wasp flap, the Jumbo Bullseye™ is perfect for recycling large quantities of cans and bottles! This Bullseye™ is ideal for collection of cans in outdoor applications.



108JB

Model Number	Volume (Litres)	Dimensions (L x W x H)	Shipping Weight
108 JB	205	24.5"x 24.5"x 35"	30 lbs

\*See our website for all available labels to suit your individual needs.



565

## The Bullseye™ Duo

Bullseyes™ combine recycling and/or waste disposal in one convenient station so you only have to invest in one unit! All of our Bullseyes™ have heavy duty rotomoulded bodies so they will last for years and years. The lid is lockable, and the Duo comes with two 550 liners. Sheets of labels are included in every box, both English and French. **Options:** Galvanized steel base with 5" swivel casters, stainless steel flaps for outdoors.

Model Number	Imperial Gallons	US Gallons	Litres	Dimensions (L x W x H)	Shipping Weight
565	18 x 2	22 x 2	82 x 2	36"x 19"x 38"	50 lbs



575

## The Bullseye™ Trio

The Bullseye™ Trio sets the industry standard in recycling stations! These stations are moulded to last with high quality construction at a reasonable cost! The Trio comes with sheets of labels and three removable 550 liners! **Options:** Galvanized steel base with 5" swivel casters, stainless steel flaps for outdoors.

Model Number	Imperial Gallons	US Gallons	Litres	Dimensions (L x W x H)	Shipping Weight
575	18 x 3	22 x 3	82 x 3	54"x 19"x 38"	90 lbs

## Liners



540  
Liner



549  
Liner



550  
Liner



559  
Liner

Model Number	Imperial Gallons	US Gallons	Litres	Dimensions (L x W x H)	Shipping Weight (lbs)	Bag Size
540 Liner	12	14	55	14.5"x 14.5"x 24.5"	6 lbs	26"x 36"
549 Liner	16	19	73	20.25"x 10.5"x 29.5"	9 lbs	30"x 38"
550 Liner	18	22	82	16.5"x 16.5"x 27.5"	7 lbs	30"x 38"
559 Liner	30	36	136	20.25"x 20.25"x 29"	13 lbs	42"x 48"

\*Techstar Liners can be used inside receptacles or on their own.  
Stocked in **black**.

# RECYCLING STATIONS

## The Bullseye™ Twin

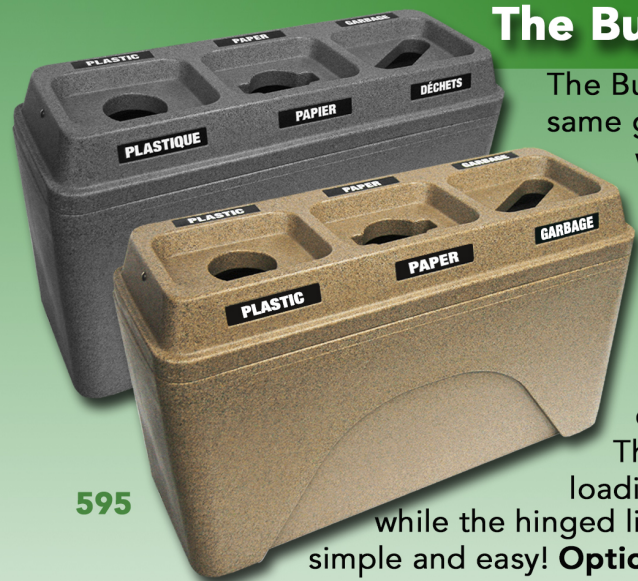
The Bullseye™ Twin is a compact double unit, ideal for separating recyclables or garbage. A variety of labels are included with every recycling station to label the Twin your way. This unit is perfect for fitting into tight areas, and the hinged lid makes emptying the Twin a breeze. It's smooth and ergonomic design makes it easy to clean, as well as visually sleek. **Options:** full colour top and base or a black base with coloured top. Either hole can be trimmed out larger.



Model Number	Imperial Gallons	US Gallons	Litres	Dimensions (L x W x H)	Shipping Weight
585	12 x 2	14 x 2	55 x 2	33"x 17"x 28"	40 lbs

\* Premium colours at no extra cost.

## The Bullseye™ Triplet



The Bullseye™ Triplet has all the same great features as the Twin, with an additional third compartment! With three distinct hole shapes this recycling unit encourages source separation on site. The variety of included labels lets you further customize the station! The Bullseye™ Triplet is top loading for easy waste disposal, while the hinged lid makes emptying this unit simple and easy! **Options:** full colour top and base (shown above in Triplet image) or a black base with coloured top (shown above in Twin image). Any of the holes can be trimmed out larger, further allowing you to customize to suit your recycling needs.

Model Number	Imperial Gallons	US Gallons	Litres	Dimensions (L x W x H)	Shipping Weight
595	12 x 3	14 x 3	55 x 3	47"x 17"x 28"	60 lbs

\* Premium colours at no extra cost.

## Premium Colours

\*Any of Techstar's Bullseyes™ can be made in premium colours at no extra cost!



**SANDSTONE**



**GRANITE GREY**

## Storall 500

The SA 500 is rotomoulded for durability, and can be safely stored outdoors; they will hold up to any weather condition. The tapered design provides the added benefit of nesting for easy stacking, perfect for minimizing storage space and lowering the cost of shipping! All this is backed by our 1 year warranty! Stocked in **yellow**.

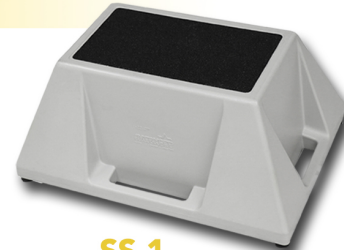


SA500

Model Number	Cubic Ft.	Load Capacity (lbs)	Outside Dimensions (inches)	Shipping Weight (lbs)
SA 500	5.5	500	30"x 25"x 24"	21 lbs

## Industrial Step Stands

Techstar's Step Stands have a super-wide design, rubber feet and large stepping area with non-skid surface, ensuring rock-solid stability! They are rotomoulded from LLDPE so they're resistant to both chemicals and sun degradation. Plus, the moulded in handles make handling the step stand no problem! These Industrial Step Stands are perfect for warehouses, boat boarding, dock steps, horse mounting, car and truck washing, mechanic shops, garages, etc. Stocked in **yellow** and **grey**.



SS-1



SS-2

Model Number	Dimensions (L x W x H)	Load Capacity	Shipping Weight
SS-1	28"x 20"x 13"	500 lbs	10 lbs
SS-2	36"x 28"x 20"	500 lbs	20 lbs

## Nest & Stack Tote Boxes

These versatile tote boxes stack both when full and empty, simply turn them 180° and they will easily nest. These Nest and Stack Totes are injection moulded from polypropylene so they are both durable and surprisingly lightweight! Stocked in **blue**.



NS-920

Model Number	Dimensions (L x W x H)	Shipping Weight	Colour
NS-920	15.25"x 12.25"x 6"	2 lbs	Blue

# THE TOUGHEST SAND & SALT BINS ON THE MARKET!

**BACKED BY OUR 5 YEAR WARRANTY!**

You simply won't find one like it! Use your SOS™ storage bin to hold sand, salt, garbage in rural areas, safety equipment and more! Use it by the pool for storing chemicals, or even on trucks for storing tools safely and securely. Techstar's SOS™ bins come with a

moulded in hasp, so they are lockable, ensuring you'll never have to worry about the contents and everything stored inside stays dry and protected.

These storage bins are rotomoulded with a double walled

lid for extra durability, as well as making them more resistant to impact and harsh weather conditions.

We promise Techstar's storage bins are tough, and will give you years and years of use!

Stocked in **yellow** and **grey**



# SOS™ STORAGE BINS

Model Number	Cubic Ft.	Load Capacity (lbs)	Outside Dimensions (inches)	Shipping Weight (lbs)
SOS 5.5	5.5	500	30" x 24" x 23"	35 lbs
SOS 11	11	1000	42" x 29" x 30"	50 lbs
SOS 18	18.5	1750	48" x 33" x 34"	65 lbs
SOS 36	36	3500	72" x 36" x 36"	88 lbs
SCOOP	4 Litres	1 US Gallon	13" x 7" Diam	2 lbs

**\*All dimensions shown are approximate in inches.  
All weights are approximate in pounds.**



**SCOOP**

## The Toughest Scoop on the Market!

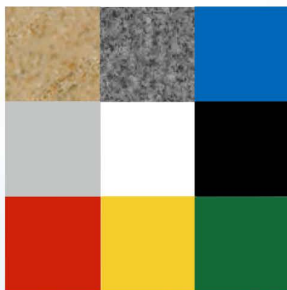
The perfect Scoop! The 3/16" wall thickness paired with the smooth rotomoulded handle makes Techstar's Scoop extremely durable. The scoop is perfectly matched for use with an SOS™ bin and stocked in **yellow**, but is also available in our **natural white** colour which is food grade, and FDA approved.

# TECHSTAR PLASTICS INC.

**MOULDING GREAT  
PRODUCTS SINCE  
1978.**

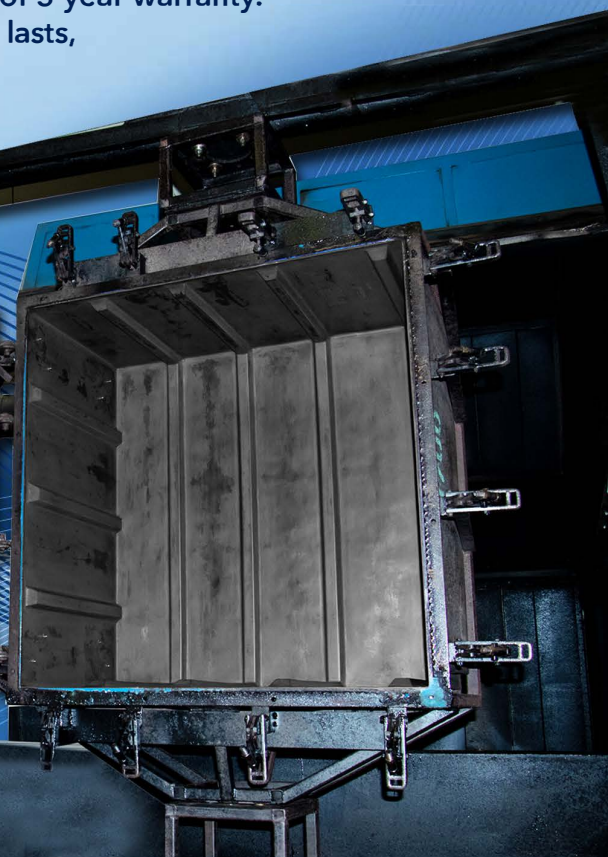
Techstar Plastics has been moulding top quality industrial products in Canada from linear low density polyethylene (LLDPE) since 1978. LLDPE gives you a relatively stiff product while maintaining the highest impact resistance for hard working factories, commercial janitorial work, industrial laundries and outdoor storage in our harsh Canadian climates. We ensure all of our resins are professionally compounded to give you consistent colours.

Techstar is Canada's largest manufacturer of plastic carts. Our line of Starcarts™ boasts over 40 models in light, medium and heavy duty versions to suit your needs. Techstar also manufactures a heavy duty line of commercial recycling centers, industrial step stands and various plastic pallets.



Techstar also has the largest line of salt/sand bins (SOS™) in Canada featuring an unheard of 5 year warranty.

If you are looking for a product that lasts, call Techstar; with over 40 years of experience we promise only the best.



**Proudly Made in Port Perry, ON**

  
Ontario  
Laundry Systems Inc.

★ Proudly Canadian. Family owned and operated since 1995.

905-673-1308  
info@ontariolaundry.com